

# DWR PARADEEP

Cyclone bulletin No.02

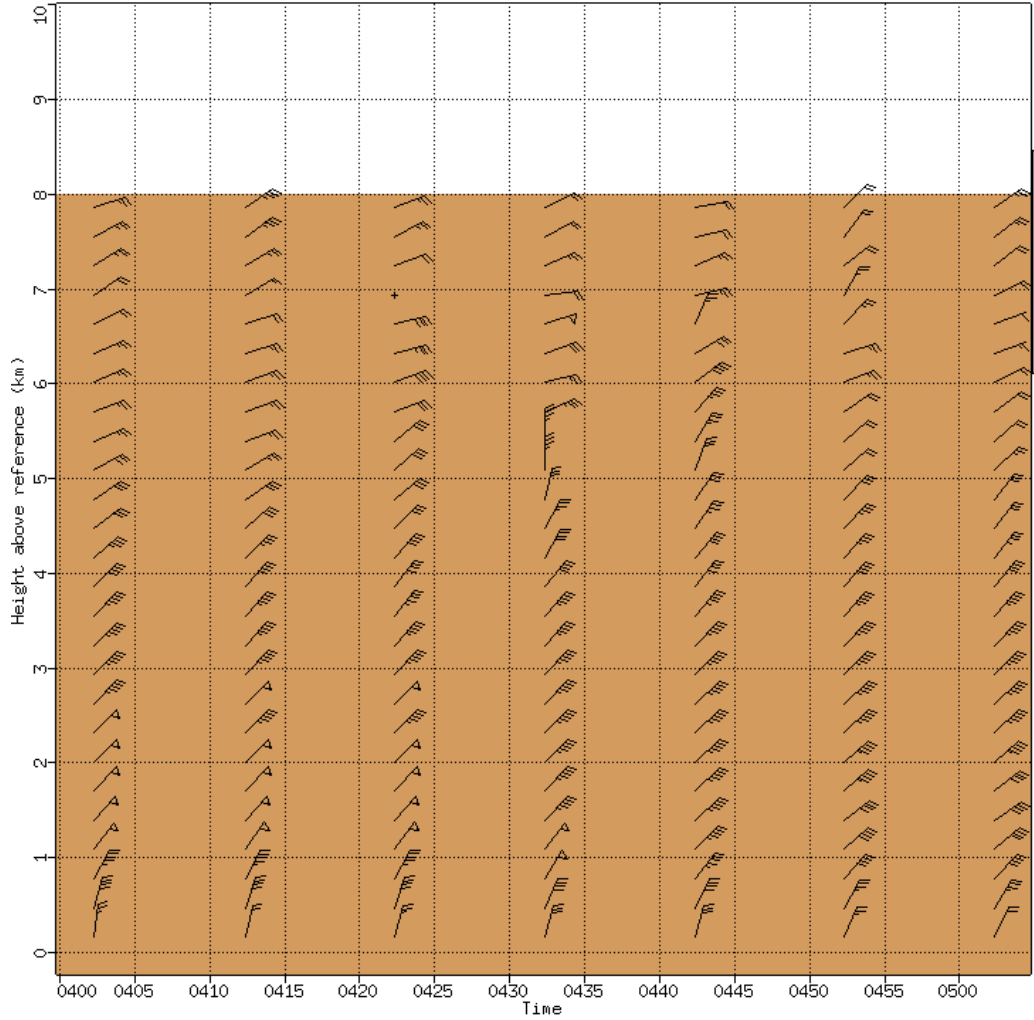
Cyclone : DANA

Time: 24/10/2024 10:30 IST

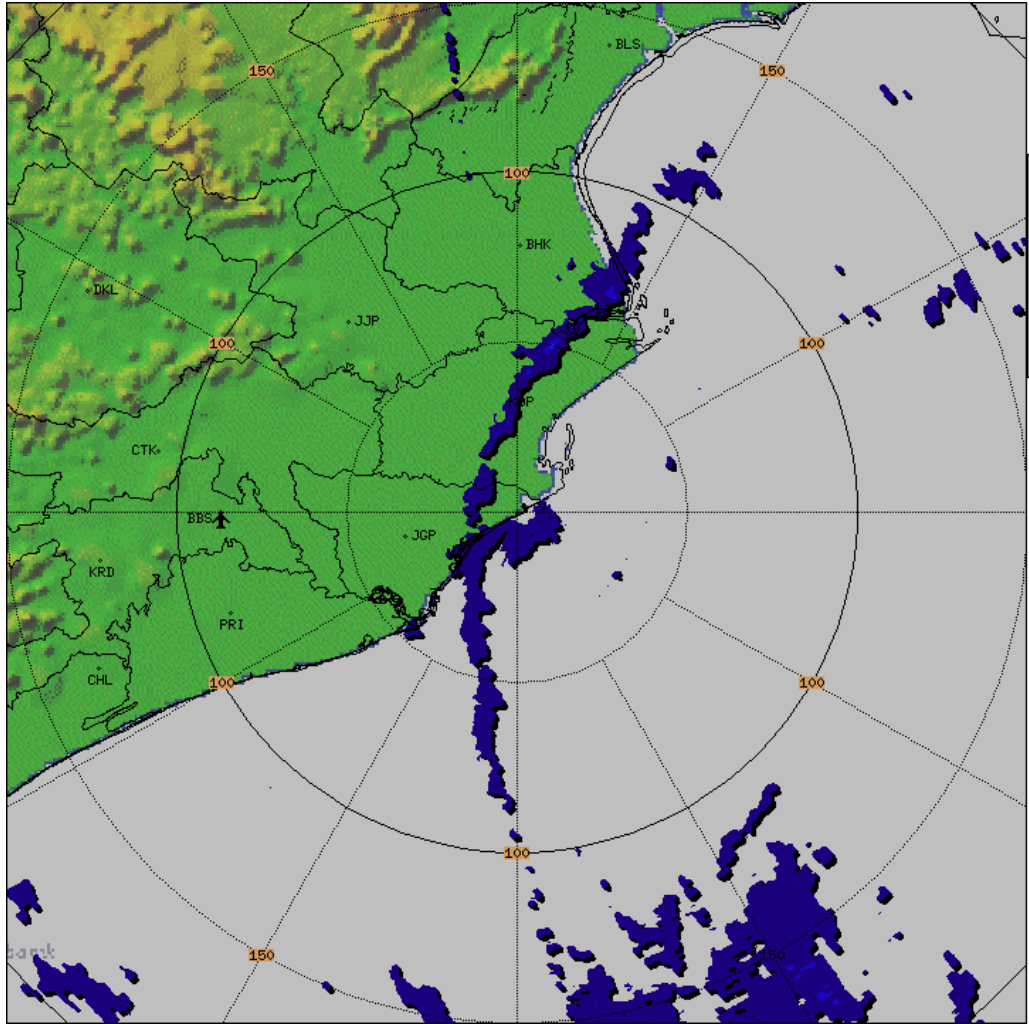
1.	Name of the Station	DWR PARADEEP
2.	Date & Time of observation (UTC)	24/10/2024 0500 UTC
3.	Name of Cyclone	DANA
4.	Information about the Eye of the cyclone	
	a)Is the Eye Visible	Distorted
	b)Shape of the Eye	N/A
	c)Diameter of the Eye (km)	16 (approx.)
	d)Estimation of centre of the cyclone based on Eye/Spiral band observation	19.32N/88.08E/124.3deg/182.4km
	e)Echo top (20 dBZ level) of rain bearing clouds around the System within 100 km radius	N/A
	f) Maximum radar reflectivity (dBZ) in eye wall and Spiral band region, its height (km) and position (azimuth and distance from the radar)	34dBZ/8.0km/144.6deg/202.3km
	g) Maximum reflectivity at any other area (spiral/ streamers etc)	39dBZ/3km/199.7deg/19.6km
	h) Maximum radial velocity in observed (mps), its height (km) and its position (azimuth and distance from the Radar)	33.4mps/4.1km/141.3deg/198.1km
	i) Maximum velocity in any other area (spiral / streamers / rain shields etc)	-43.6mps/2.1km/114.5deg/126.3km
5.	Tendency of the Cyclone	
	a. Intensity(Increasing/Decreasing)	N/A
	b. Duration for which the information on movement pertains to	One hour
	c. Direction of Movement	NW
	d. Estimated speed of Movement	15 kmph
6.	Any other Significant Feature	N/A
7.	Confidence	LOW

Dhaneesh K (Sc.D)

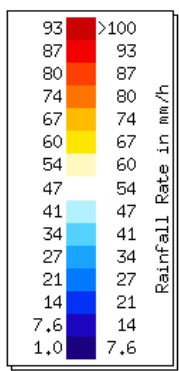
OFFICER-IN-CHARGE  
DWR Paradeep

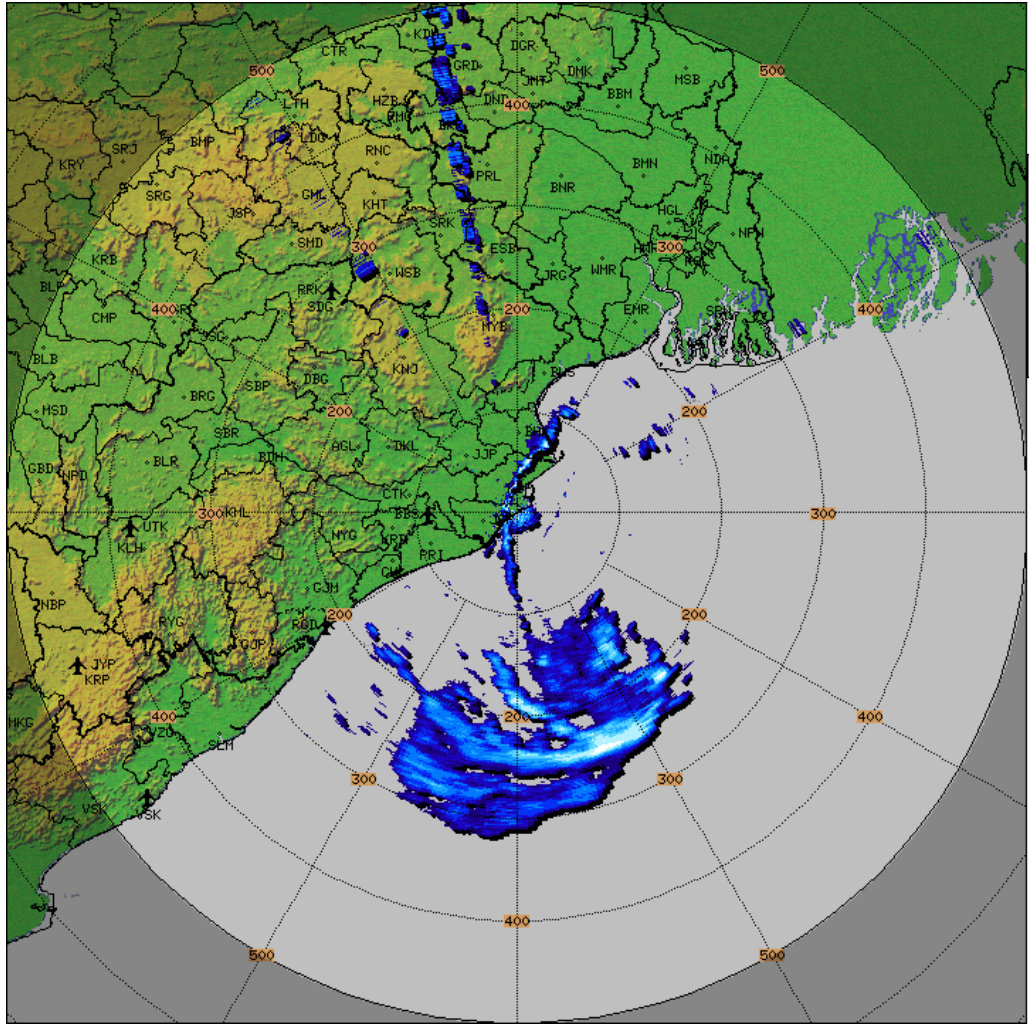


PARADEEP-RADAR  
Vol. Vel. Proc.  
VVP\_30KM  
Task: IMD-B  
#Intervals:26  
Heights:0-8 km  
Max Range:30 km  
**05:02:17Z**  
24 OCT 2024 UTC



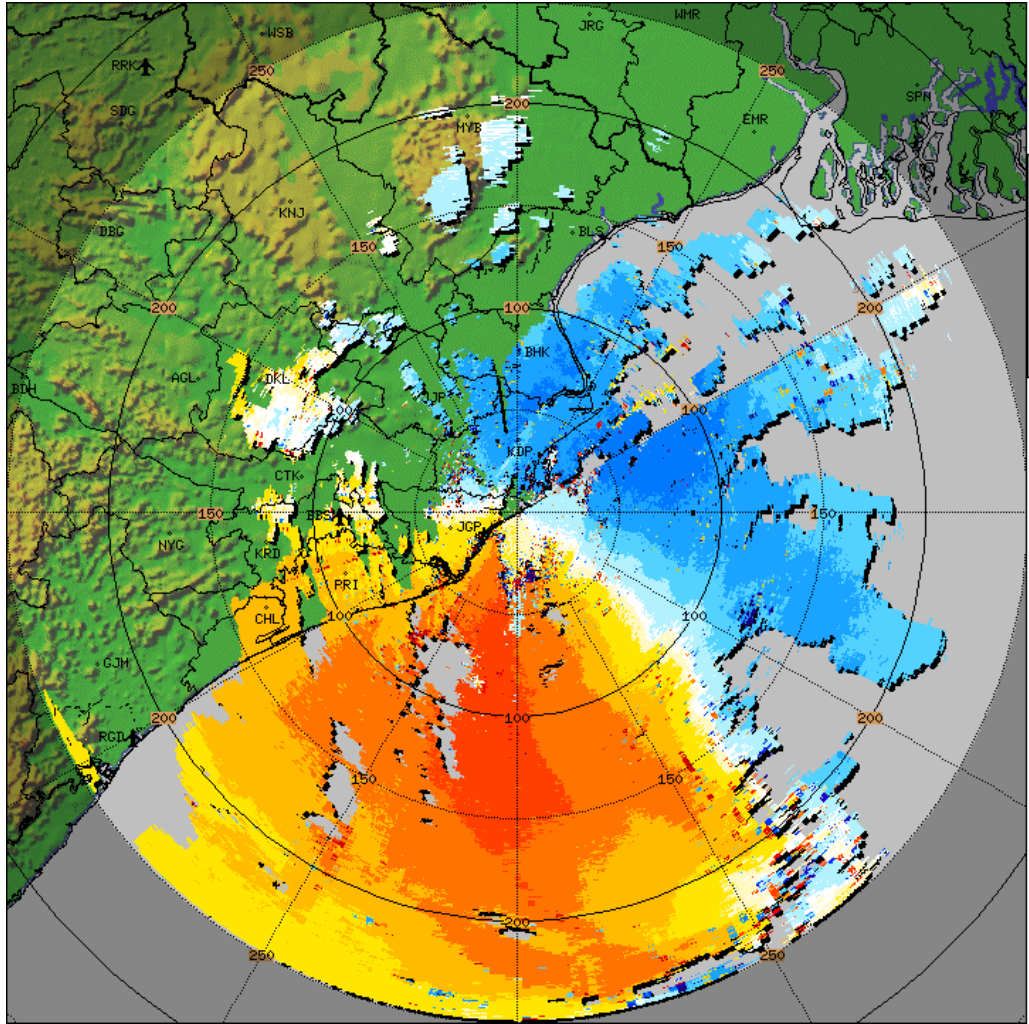
PARADEEP-RADAR  
 Surface Rainfall  
 SRI\_150  
 Task: IMD-B  
 PRF:600/450  
 Melt:Unknown  
 Max Range:150 km  
**05:02:17Z**  
**24 OCT 2024 UTC**



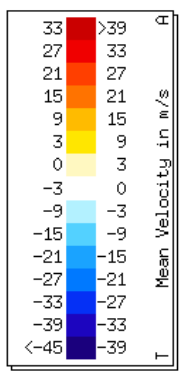


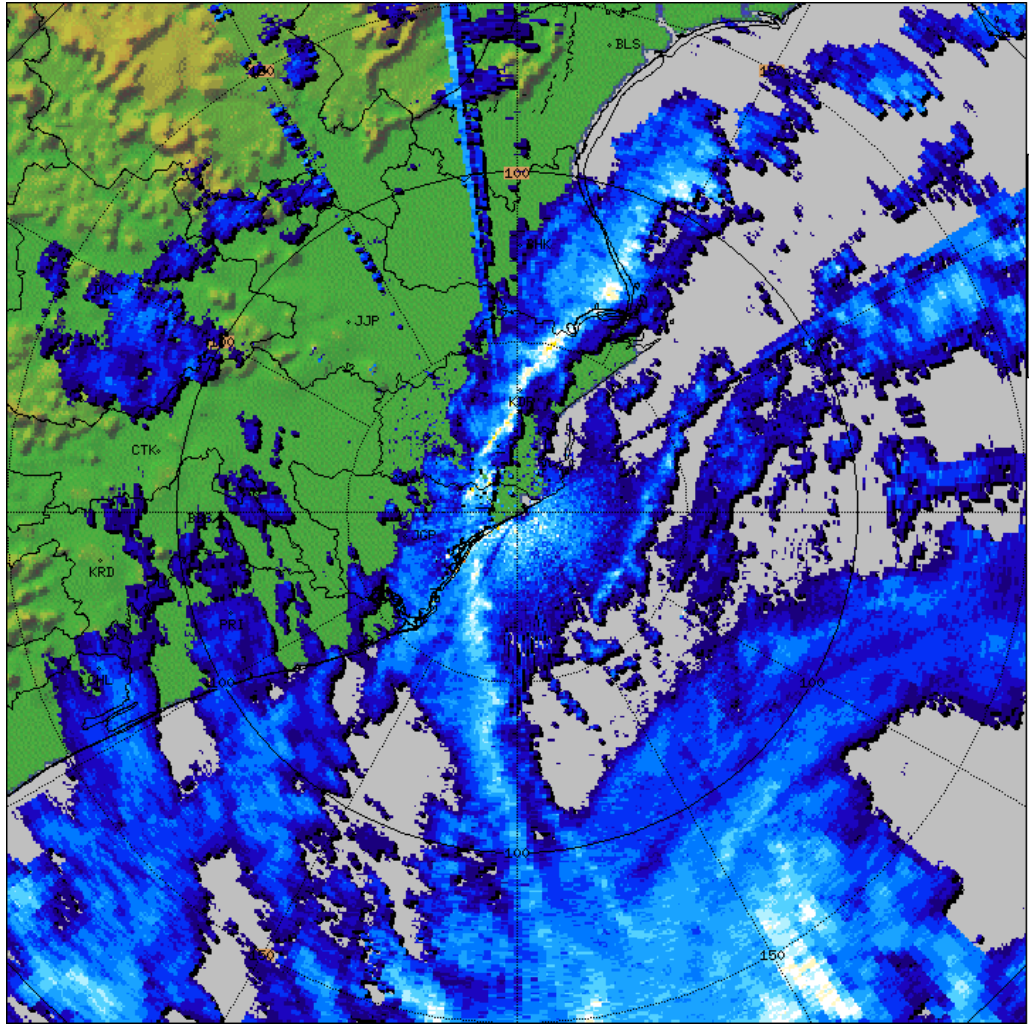
PARADEEP-RADAR  
 PPI  
 PPI\_Z  
 Task: IMD-C  
 PRF: 250Hz  
 Elevation:0,5  
 Max Range:500 km  
**05:00:24Z**  
**24 OCT 2024 UTC**

57,3	>60,0	Reflectivity in dBZ
54,7	57,3	
52,0	54,7	
49,3	52,0	
46,7	49,3	
44,0	46,7	
41,3	44,0	
38,7	41,3	
36,0	38,7	
33,3	36,0	
30,7	33,3	
28,0	30,7	
25,3	28,0	
22,7	25,3	
20,0	22,7	

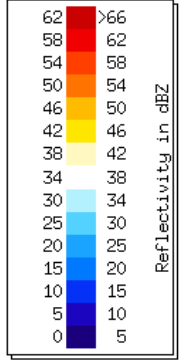


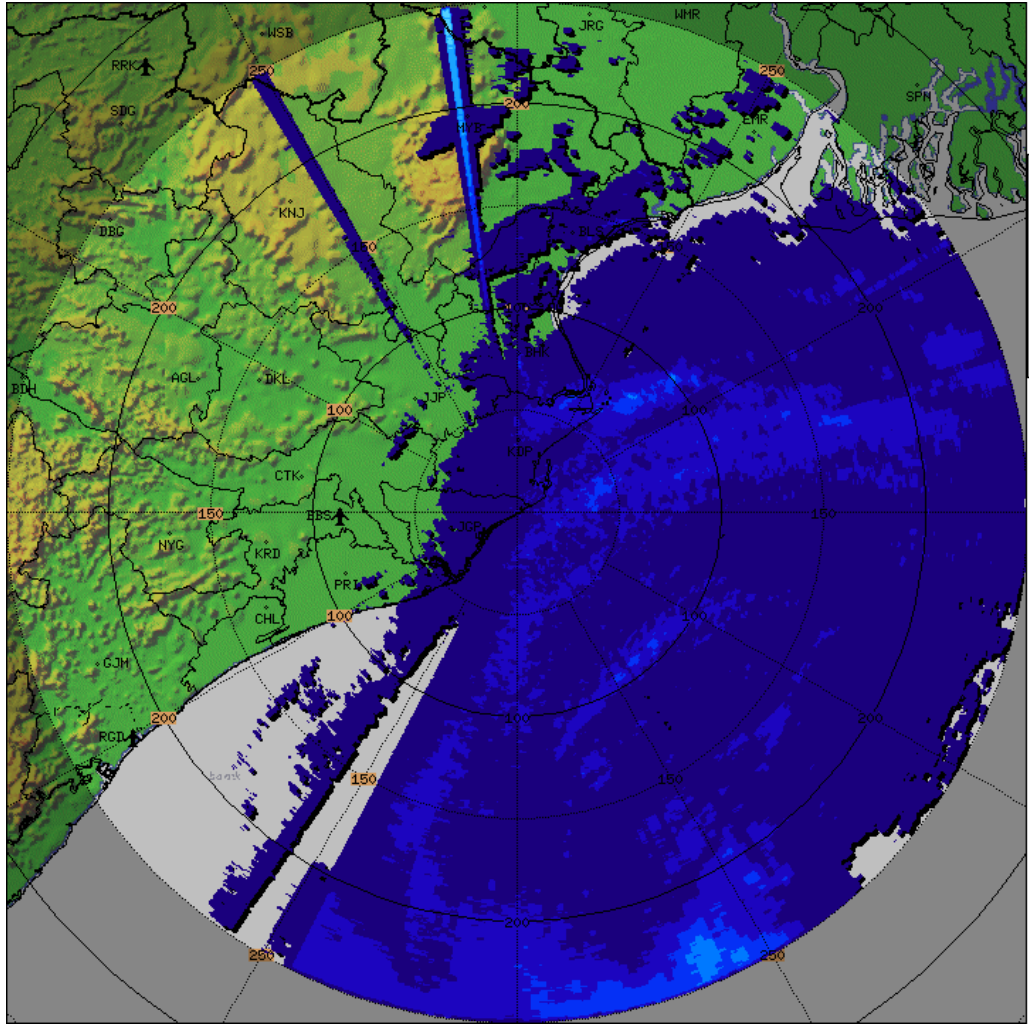
PARADEEP-RADAR  
 PPI  
 PPI\_V  
 Task: IMD-B  
 PRF:600/450  
 Elevation:0.5  
 Max Range:250 km  
**05:02:17Z**  
**24 OCT 2024 UTC**



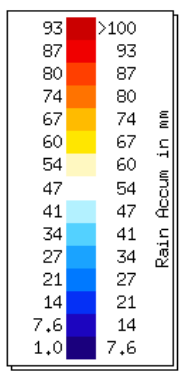


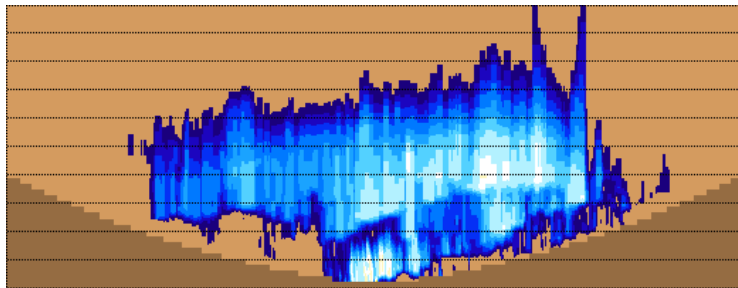
PARADEEP-RADAR  
 PPI  
 PPI\_Z\_150KM  
 Task: IMD-B  
 PRF:600/450  
 Elevation:0.5  
 Max Range:150 km  
**05:02:17Z**  
 24 OCT 2024 UTC





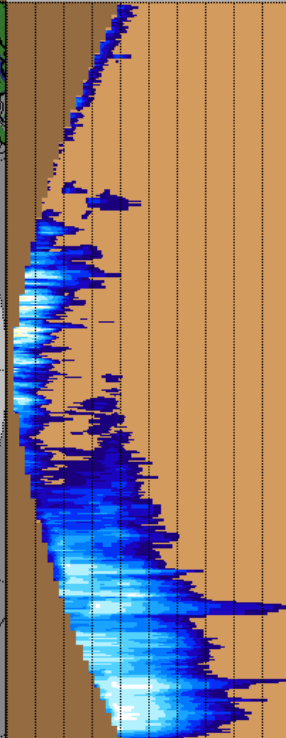
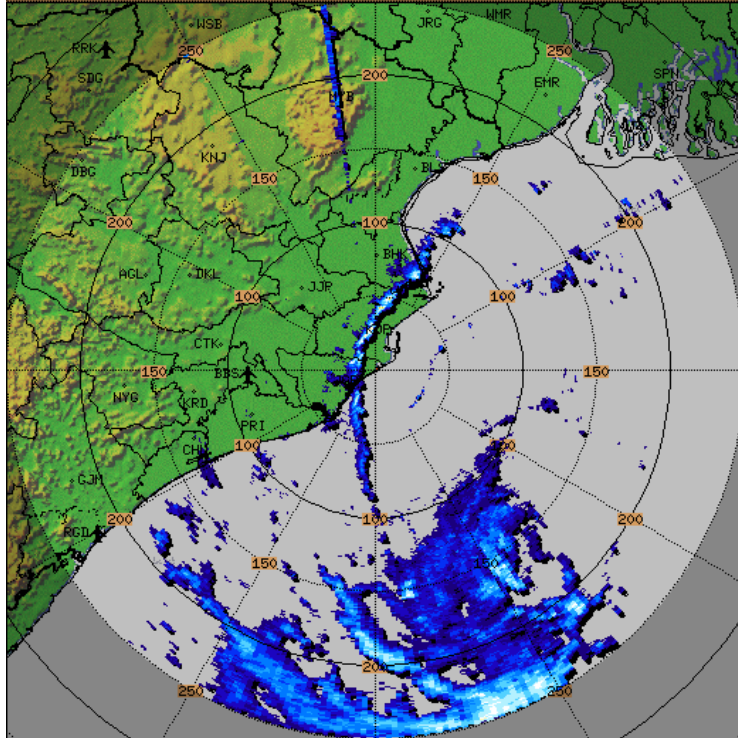
PARADEEP-RADAR  
 N Hours Rainfall  
 HOUR\_24  
 Task: IMD-B  
 PRF:600/450  
 Hours:21/24  
 Max Range:250 km  
**03:00:00Z**  
**24 OCT 2024 UTC**





13.6  
12.1  
10.6  
9.0  
7.5  
6.0  
4.5  
3.0  
1.5

PARADEEP-RADAR  
Max with panels  
MAX\_Z  
Task: IMD-B  
Min Hgt:0.0 km  
Max Hgt:15.0 km  
Max Range:250 km  
**05:02:17Z**  
24 OCT 2024 UTC



57.3	>60.0	Reflectivity in dBZ
54.7	57.3	
52.0	54.7	
49.3	52.0	
46.7	49.3	
44.0	46.7	
41.3	44.0	
38.7	41.3	
36.0	38.7	
33.3	36.0	
30.7	33.3	
28.0	30.7	
25.3	28.0	
22.7	25.3	
20.0	22.7	